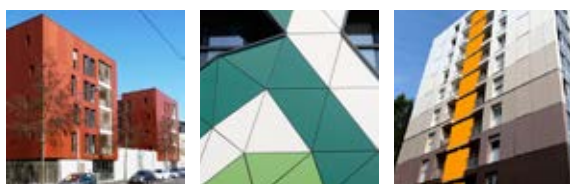


# SOCIAL HOUSING FOR TOMORROW



# MAKE YOUR COMMUNITY TODAY STAND OUT TOMORROW

ALL LIVING SPACE NEEDS TO BE COMFORTABLE, INVITING AND GOOD-LOOKING. SO THE AESTHETICS OF RESIDENTIAL BUILDINGS AND AREAS ARE IMPORTANT. EVEN MORE IMPORTANT IS THEIR ABILITY TO RETAIN THEIR INITIAL GOOD LOOKS FOR A LONG TIME, WITH MINIMUM MAINTENANCE. THIS ENSURES CONTINUOUS USE OF THE BUILDING, WITHOUT FREQUENT INTERRUPTIONS FOR COSTLY REPAIRS, RENOVATIONS AND UPGRADES. LET US SHOW YOU HOW THIS AMBITIOUS GOAL FOR TOMORROW CAN BE STARTED TODAY.





## LONG LASTING AESTHETICS

A residential building and its surroundings need to be warm and inviting. Good looks are highly appreciated, as an attractive environment enhances the comfort of the community and its residents.



## LOW TOTAL COST OF OWNERSHIP

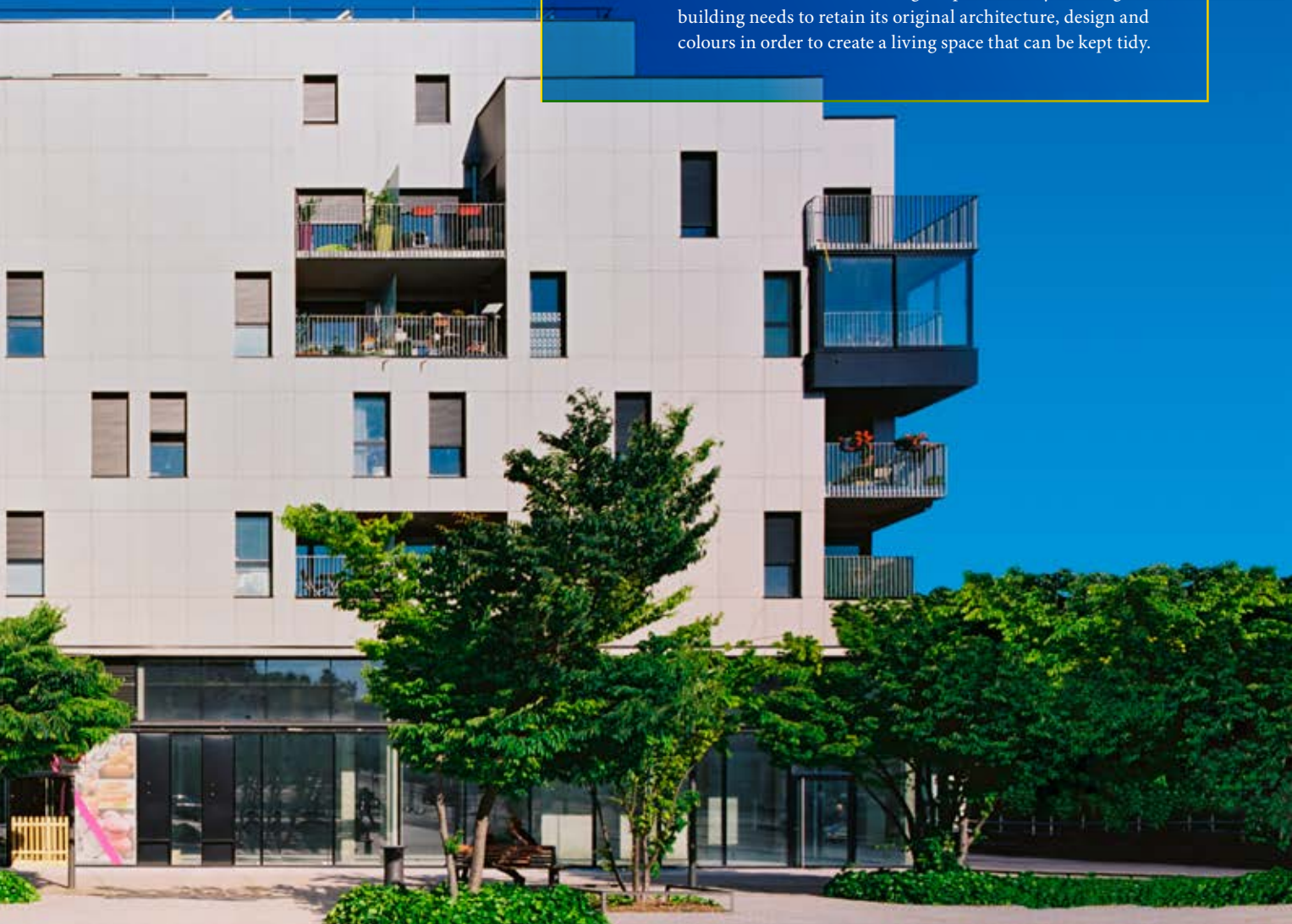
The choices you make today can help reduce your total cost of ownership. A durable building lowers the need for costly repairs and early refurbishment.

TRESPA®



## HIGH PERFORMANCE

A clean environment encourages a pleasant way of living. Your building needs to retain its original architecture, design and colours in order to create a living space that can be kept tidy.



TRESPA®

# LONG LASTING RESIDENTIAL AREAS WITH TRESPA

TRESPA IS AT THE FOREFRONT OF CUTTING-EDGE BUILDING TECHNIQUES. THE COMPANY HAS MANY YEARS OF EXPERIENCE IN THE SOCIAL HOUSING SECTOR, BOTH IN NEW BUILD AND RENOVATION PROJECTS WITH WIDE NETWORKS OF ARCHITECTS AND LOCAL INSTALLERS. WITH A STRONG FOCUS ON SERVICE, TRESPA PROVIDES ANSWERS AND INFORMATION TO SUPPORT CUSTOMERS DURING ALL PHASES OF A PROJECT.

Trespa® Meteon® is a decorative high-pressure compact laminate (HPL) with an integral surface manufactured using Trespa's unique in-house technology, Electron Beam Curing (EBC). The blend of up to 70% natural fibres and thermosetting resins, manufactured under high pressures and temperatures yields highly stable dense panels. Trespa® Meteon® architectural panels are designed for exterior (cladding) applications.



## OUTSTANDING AESTHETICS

With Trespa® Meteon® you can create attractive designs and dynamic architecture. The product is available in a wide range of colours and finishes including subtle natural motifs.

To see examples of our many residential reference projects, please go to [trespa.com](http://trespa.com) or contact your Trespa sales representative.



*Le clos de Netwiller Borderouge | Toulouse, FR*



*Les Hameaux | Thiais, FR*



*Housing Yersin | Paris, FR*



## LOW MAINTENANCE

Trespa® Meteon® is highly durable and highly impact resistant. It is designed to retain its shape and colour and stays looking great for many years. Thanks to Trespa's proprietary EBC technology, environmental contamination and moisture have little effect on the panel's surface. The closed surface of Trespa® Meteon® practically withstands dirt accumulation, keeping the facade smooth and easy to clean. Contamination such as automobile exhaust particles, crayon and graffiti can usually be removed if properly treated, following Trespa's cleaning and maintenance instructions.



“In my experience Trespa® Meteon® has one of the easiest surface panels to clean. Graffiti can be removed completely, yet the surface quality remains totally unaffected. This is worth mentioning because it is quite unique.”

*Mr. Helge Weiss, Directeur Technico Commercial, Tilan sarl, France*



## ENDURING THE TEST OF TIME

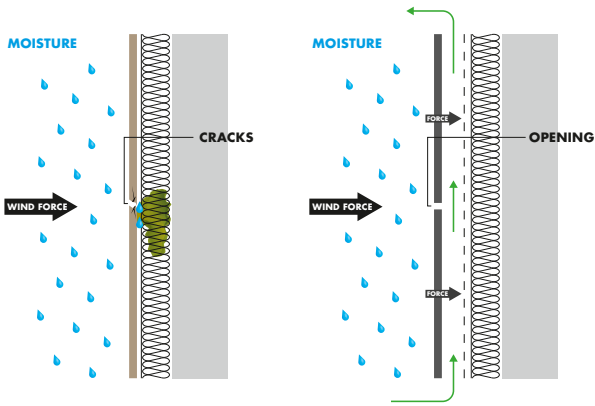
Trespa® Meteon® panels not only meet the industry standard EN438 but they also achieve high classification for UV resistance and outdoor colour stability in Florida cycle accelerated weathering tests, which exceed the Western European cycle. The material has a long track record of proven performance and this can be demonstrated by multiple project references – some of them dating back over 20 years - which show no significant difference when compared to newly produced panels.



*Aambosveld | Heerlen, NL*



## TRESPA VENTILATED FACADES FOR INDOOR COMFORT



Single Skin Construction

Trespa Ventilated Façade Construction

### PREVENTING CRACKS AND MOISTURE

In a single skin construction such as render, outside weather conditions can seriously affect the outer skin causing cracks and water infiltration. Trespa® Meteon®, used in a ventilated façade, provides a screen, effectively protecting the building's structure from the effects of extreme weather conditions and without surface cracking. Ventilation behind Trespa® Meteon® panels draws air through the cavity, aiding in the removal of heat and moisture from rain or condensation. The dry and comfortable conditions of the building may have a positive contribution to the indoor environment.

### ENERGY SAVING AND INDOOR COMFORT BY EXTERNAL INSULATION

Next to the ventilated façade, the applied external insulation limits the floor thermal bridge, which helps to improve the energy efficiency of the building and keeps comfortable wall temperatures, reducing also condensation risk.

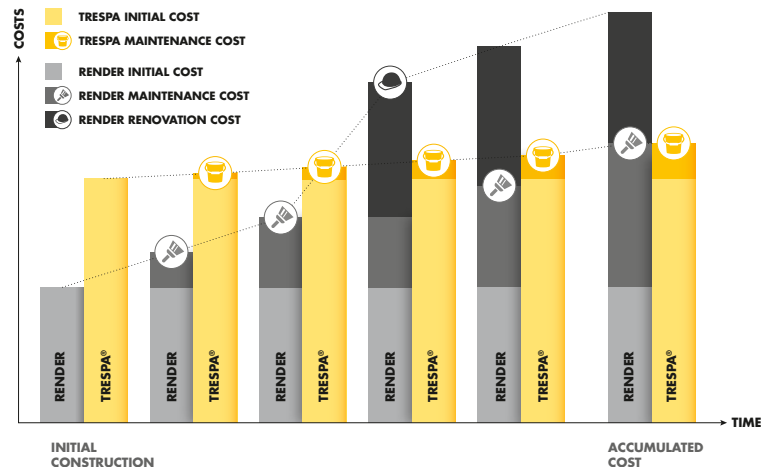
“Occupants noticed already few months after the renovation that moisture problems were gone.”

*Mr. Aitor Ubiria Manzarraga, Architect, Spain*



## LOW TOTAL COST OF OWNERSHIP

The perfect building has a great appearance that lasts for many years without requiring frequent maintenance or refurbishment. Trespa® Meteon® offers excellent outdoor colour stability and high product performance with low maintenance. Applied in combination with ventilated façade technology, the material supports solutions that deliver the maximum building life cycle while maintaining the building's high value and uninterrupted use. Trespa® Meteon® helps you to achieve your goals of contained costs and sustainable asset management.



# TRESPA® METEON® DELIVERY PROGRAMME


## UNI COLOURS

A28.2.1 Aquamarine	A22.3.1 Ocean Grey	A24.0.3 Polar Blue	A23.0.4 Mineral Blue	A22.2.4 Powder Blue	A22.2.1 Blush Grey	A21.1.0 Winter Grey	A05.0.0 Pure White
A22.2.1 Translucent Green	A24.4.1 Steel Blue	A22.1.6 Royal Blue	A22.4.4 Brilliant Blue	A21.5.4 Cobalt Blue	A22.6.2 Dark Denim	A20.2.3 Light Viola	A03.4.0 Silver Grey
A30.3.2 Verdigris	A35.4.0 Cactus Green	A28.6.2 Mid Green	A26.5.4 Pacific	A20.7.2 Dark Blue	A21.7.0 Steel Grey	A20.5.2 Lavender Blue	A21.5.1 Mid Grey
A37.2.3 Spring Green	A33.3.6 Brilliant Green	A32.7.2 Dark Green	A34.8.1 Forest Green	A90.0.0 Black	A25.8.1 Anthracite Grey	A05.5.0 Quartz Grey	A16.5.1 Mauve
A03.1.0 Pastel Grey	A37.0.8 Lime Green	A36.3.5 Turf Green	A08.8.1 Dark Brown	A14.7.2 Deep Red Brown	A11.8.0 Ceramic Greige	A06.7.1 Natural Greige	A06.5.1 Toscana Greige
A05.1.1 Stone Beige	A41.0.6 Mojito Green	A08.4.5 Rusty Red	A09.6.4 Mahogany Red	A12.6.3 Wine Red	A12.3.7 Carmine Red	A10.4.5 Sienna Brown	A10.6.1 Taupe
A04.0.0 Cream White	A04.0.5 Zinc Yellow	A06.3.5 Ochre	A10.1.8 Red Orange	A12.1.8 Passion Red	A17.3.5 Cyclam	A11.4.4 English Red	A08.3.1 Stone Grey
A05.1.0 Papyrus White	A07.1.1 Sand	A05.1.2 Champagne	A04.1.7 Gold Yellow	A05.1.4 Sun Yellow	A08.2.3 Salmon	A10.3.4 Terra Cotta	A08.2.1 Mid Beige

TRESPA® METEON® UNI COLOURS ARE AVAILABLE IN:  
SATIN ■ ■ ■ ■ ■ | ROCK ■ ■ ■ ■ ■

## NEW LUMEN

I90.0.0 Metropolis Black	L21.5.1 London Grey	L25.8.1 New York Grey	I05.0.0 Athens White
I05.1.2 Barcelona Beige	L11.4.4 Arizona Red	I09.6.4 India Brown	I06.5.1 Italian Greige



TRESPA® METEON® LUMEN:  
To experience the effect of the Lumen finishes, we advise to order samples.

## USING RENEWABLE RESOURCES

Trespa® Meteon® panels contain up to 70% natural fibres, most of which originate from sustainable forests. The entire Trespa® Meteon® product range is now available with PEFC™ or FSC™ certification upon request, in restricted quantities.

## WOOD DECORS

NW26 Core Ash	NW28 Halinstad	NW24 Greyed Cedar	NW17 Milano Grigio	NW05 Loft Brown	NW22 Slate Wood	NW12 Natural Bagnenda	NW15 Milano Sabbia
NW27 Denver Oak	NW29 Woodstone	NW25 Hesbania	NW14 French Walnut	NW13 Country Wood	NW23 Nordic Black	NW03 Harmony Oak	NW08 Italian Walnut
NW20 Bleached Pine	NW21 Australian Pine	NW02 Elegant Oak	NW18 Light Mahogany	NW19 Dark Mahogany	NW09 Wenge	NW11 Santos Palisander	NW06 Montreux Amber

TRESPA® METEON® WOOD DECORS ARE AVAILABLE IN:  
SATIN ■ ■ ■ ■ ■ | MATT ■ ■ ■ ■ ■  
(NW24-NW29 only available in Matt)

## METALLICS

M35.7.1 Malachite Green	M21.8.1 Graphite Grey	M51.0.2 Urban Grey	M51.0.1 Aluminium Grey	M40.4.3 Mustard Yellow	M06.4.1 Amber	M05.5.1 Titanium Bronze	M04.4.1 Titanium Silver
M20.4.2 Northern Light	M12.4.2 Garnet Red	M53.0.1 Copper Red	M53.0.2 Copper Yellow	M24.3.3 Lagoon	M21.3.4 Azurite Blue		

TRESPA® METEON® METALLICS ARE AVAILABLE IN:  
SATIN ■ ■ ■ ■ ■ | ROCK ■ ■ ■ ■ ■ | GLOSS ■ ■ ■ ■ ■

## NATURALS

NEW NA11 French Limestone	NEW NA12 Natural Chalkstone	NEW NA13 Silver Quartzite	NEW NA14 WEAthered Basalt	NEW NA15 Indian Terra Cotta		
NEW NM02 Forged Alloy	NEW NM06 Tempered Grey	NEW NM07 Casted Grey	NEW NM05 Hardened Brown	NEW NM01 Rusted Brown	NEW NM04 Sintered Alloy	NEW NM03 Corroded Green

TRESPA® METEON® NATURALS ARE AVAILABLE IN:  
MATT ■ ■ ■ ■ ■ | MATT-ROCK ■ ■ ■ ■ ■ (NM's only available single sided)  
★ Decors have glass elements in the surface.

FOR MORE DETAILED TECHNICAL INFORMATION, PLEASE VISIT **TRESPA.INFO**



## CONTACT US

### TRESPA INTERNATIONAL B.V.

P.O. Box 110, 6000 AC Weert  
Wetering 20, 6002 SM Weert  
The Netherlands  
www.trespa.com

### CUSTOMER SERVICE DESK

#### EMEA EXPORT

Tel: +31 (0) 495 458 359  
Fax: +31 (0) 495 458 383  
Info.Export@Trespa.com

### TRESPA UK LTD.

35 Calthorpe Road  
Edgbaston  
Birmingham, B15 1TS  
United Kingdom  
Tel: 0808-2340268  
Fax: 0808-2341377  
Info.UK@Trespa.com

### TRESPA NORTH AMERICA LTD.

62 Greene Street (Ground Floor)  
New York, NY 10012  
United States of America  
Tel: +1 800 487 3772  
Fax: +1 866 298 3499  
Info.NorthAmerica@Trespa.com

### TRESPA CHINA CO. LTD.

Room 2604-05, HuaiHai Plaza  
No. 1045 HuaiHai Road (central)  
ShangHai 200031  
P.R. China  
Tel: +86 (0) 21 6288 1299  
Fax: +86 (0) 21 6288 1296  
Info.China@Trespa.com

### CUSTOMER SERVICE DESK

#### ASIA/PACIFIC

Tel: +86 (0) 21 5465 8388  
Fax: +86 (0) 21 5465 6989  
Info.APAC@Trespa.com

## VISIT US

### TRESPA DESIGN CENTRE NEW YORK

62 Greene Street (Ground Floor)  
New York, NY 10012  
United States of America  
Tel: +1 212 334 6888  
Fax: +1 866 298 3499  
TDC.NewYork@Trespa.com  
www.trespa.com/tdc

### TRESPA DESIGN CENTRE WEERT

Wetering 20  
6002 SM Weert  
The Netherlands  
Tel: +31 (0) 495 458 845  
TDC.Weert@Trespa.com  
www.trespa.com/tdc

### TRESPA DESIGN CENTRE BARCELONA

Calle Ribera 5,  
08003 Barcelona  
Spain  
Tel: +34 (0) 93 295 4193  
Fax: +34 (0) 93 116 3300  
TDC.Barcelona@Trespa.com  
www.trespa.com/tdc

### TRESPA DESIGN CENTRE SANTIAGO

Eliodoro Yáñez 2831  
Torre A - Local 1  
Providencia, Santiago  
Chile  
Tel: +56 2 4069990  
TDC.Santiago@Trespa.com  
www.trespa.com/tdc

## FOLLOW US



## DISCLAIMER

### GENERAL

These terms apply to the use of this document and such use automatically means that the other party agrees to these terms. The information provided by Trespa International B.V. ("Trespa") in this document is solely indicative. Trespa is unable to warrant the accuracy and completeness of this information. Trespa may change the information included in this document at any time and without further notice. Trespa's customers and third parties must ascertain that they have the most recent document (for the most recent version, please consult: www.trespa.com). No rights can be derived from the information provided; the use of the information is at the other party's risk and responsibility. Trespa does not warrant that the information in this document is suitable for the purpose for which it is consulted by the other party. This document does not contain any design, structural calculation, estimate or other warranty or representation that customers and third parties may rely on. This document does not guarantee any properties of Trespa products. Colours used in Trespa's communications (including but not limited to printed matter) and in samples of Trespa's products may differ from the colours of the Trespa products to be supplied. Samples are not intended for use in product tests and are not representative of characteristics of the Trespa

products. Trespa's products and samples are produced within the specified colour tolerances and the colours (of production batches) may differ, even if the same colour is used. The viewing angle also influences the colour perception. Metallic panels feature a surface whose colour appears to change based on the direction from which it is viewed. The specified colour stability and colour specifications relate only to the decorative surface of the Trespa products, not to the core material and samples of the Trespa products. Trespa products are delivered ex-works with straight, sawn sides. Customers and third parties must have a professional adviser inform them about (the suitability of) the Trespa products for all desired applications and about applicable laws and regulations. Trespa does not warrant the above. The most recent version of the current delivery programme and the Material Properties Datasheet can be found at www.trespa.info. Only the information in the most recent and valid Material Property Datasheet should be used to select and provide advice regarding Trespa products. Trespa reserves the right to change (the specifications for) its products without prior notice.

### LIABILITY

Trespa is not liable (neither contractual nor non-contractual) for any damage arising from or

related to the use of this document, except if and to the extent that such damage is the result of wilful misconduct or gross negligence on the part of Trespa and/or its management. The limitation of liability applies to all parties affiliated with Trespa, including but not limited to its officers, directors, employees, affiliated enterprises, suppliers, distributors, agents, and representatives.

### GENERAL CONDITIONS

All oral and written statements, offers, quotations, sales, supplies, deliveries and/or agreements and all related activities of Trespa are governed by the Trespa General Terms and Conditions of Sale (*Algemene verkoopvoorwaarden Trespa International B.V.*) filed with the Chamber of Commerce and Industry for Noord- en Midden-Limburg in Venlo (NL) on 11 April 2007 under number 24270677, which can be found on and downloaded from the Trespa website, www.trespa.com/documentation. All oral and written statements, offers, quotations, sales, supplies, deliveries and/or agreements and all related work of Trespa North America, Ltd. are governed by the Trespa North America General Terms and Conditions of Sale, which can be found on and downloaded from the Trespa website, www.trespa.com/documentation. A copy of these general conditions of sale will be provided free of

charge on request. All general terms and conditions other than the conditions mentioned above are dismissed and do not apply, regardless of whether such terms and conditions are referred to on requests for offers, offer confirmations, stationery and/or other documents of the other party, even if Trespa does not expressly object to such terms and conditions.

### INTELLECTUAL PROPERTY

All intellectual property rights and other rights regarding the content of this document (including logos, text and photographs) are owned by Trespa and/or its licensors. Any use of the content of this document, including distribution, reproduction, disclosure, storage in an automated data file or the dispatch of such a file without Trespa's prior written consent is explicitly prohibited. \* Trespa, Meteon, Athlon, TopLab, TopLab<sup>PLUS</sup>, TopLab<sup>ECO-FIBRE</sup>, TopLab<sup>VERTICAL</sup>, TopLab<sup>BASE</sup>, Virtuo, Izeon, Pura NFC, Volkern, Trespa Essentials and Mystic Metallics are registered trademarks of Trespa.

### QUESTIONS

Should you have any questions or comments, please do not hesitate to contact Trespa.

VERSION 3.0 ■ BROCHURE CODE U1078 ■ DATE 02-2016



VISIT [TRESPA.COM](http://TRESPA.COM) FOR THE MOST  
UP TO DATE VERSION OF THIS DOCUMENT.

TRESPA®