

100-YEAR ANNIVERSARY COLLECTION

In your hands is the exclusive **Anniversary Collection**, created by Abbott Miller, Pentagram, celebrating 100 years of Formica® brand history and its endless potential. Underscoring the seamlessness of past-present-future, this collection brings you four patterns - Dotscreen™, Halftone™, Endless™ and Ellipse™ - in 12 new décors.



HALFTONE™

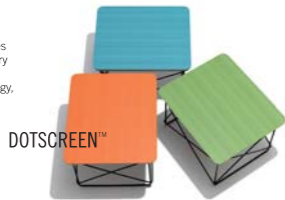
Halftone™ features near-bright colours patterned with various sizes of toned dots, reminiscent of halftone printing screens.



ELLIPSE™

Ellipse™ plays off the anniversary theme by using the "hidden oval" in the Formica® brand logo, creating a series of layered strands that ripple across the surface. Seemingly infinite, the pattern only repeats every 500 to 700 sheets*.

© Community Registered Design n° 002138776



DOTSCREEN™

Dotscreen™ celebrates Formica® brand history of exuberant colour and printing technology, pairing vivid colours with extremely fine micro-dots in continuous ribbons.



ENDLESS™

Endless™ creates a digital grain from bars that alternately layer and punch through a coloured base. The result is a continuous tone-on-tone, architectural pattern that provides visual interest at close range and, from a distance, provides a geometric texture. Like Ellipse™, the pattern only repeats every 500 to 700 sheets*.

© Community Registered Design n° 002138768

500 to 700 sheets = 2,09 km = 6.5 Eiffel Towers



*The method creates seemingly infinite patterns that appear consistent due to the fluidity of the overlapping elements. Unlike most patterns that repeat every 1.27 m, the Ellipse™ and Endless™ patterns only reoccur every 500 to 700 sheets, the equivalent to more than 2 kilometres in length.

Austria
Tel: +49 (0) 180 367 64 22
austria@formica.com

Belgium
Tel: +32 2 705 18 18
contact.belgie@formica.com

Denmark
Tel: +45 43 58 82 00
info.danmark@formica.com

Finland
Tel: +358 9 5800 200
info.finland@formica.com

France
Tel: +33 (0) 3 87 29 10 13
service.echantillons@formica.com

Germany
Tel: +49 (0) 180 367 64 22
kontakt.deutschland@formica.com

Holland
Tel: +31 (0) 70 413 48 20
contact.nederland@formica.com

Ireland
Tel: +353 1 872 4322
samples.uk@formica.com

Italy
Tel: +39,011.9027092
italia@formica.com

Middle East
Tel: +971 4 329 82 80
middle.east@formica.com

Norway
Tel: +47 800 13 016
info.norge@formica.com

Poland
Tel: +48 22 516 20 84/85
info.polska@formica.com

Russia
Tel: +7 495 646 07 25
Samples tel: +8 800 333 11 63
russia@formica.com

Spain
Tel: +34 902 11 47 73
muestras@formica.com

Sweden
Tel: +46 42 38 48 00
info.sverige@formica.com

Switzerland
Tel: +41 44 518 89 18
schweiz@formica.com

United Kingdom
Tel: +44 191 259 3100
Samples tel: +44 191 259 3512
samples.uk@formica.com



formica.com

A Harsco Building Company

© 2013 The DLR Corporation.

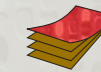
Formica and the Formica And Decors are registered trademarks of The DLR Corporation.

June 2013



100-YEAR ANNIVERSARY COLLECTION

100-YEAR ANNIVERSARY COLLECTION



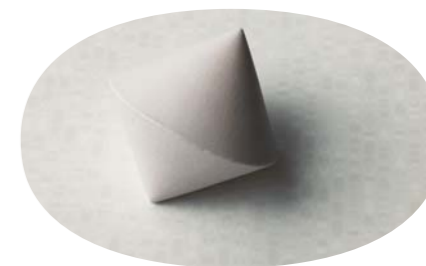
Formica® Laminate

THE ORIGINAL HIGH PRESSURE LAMINATE BY FORMICA GROUP

Formica® High Pressure Laminate (HPL) is manufactured through fusing multiple layers of impregnated paper under high pressure and temperature to create a hard wearing, durable and hygienic decorative surfacing material.

Surface Finish: Matte 58™

Grade: Horizontal, General Purpose, Postforming (HGP)
Sheet size: 3050 x 1300 mm



HALFTONE™



F6620 Tangelo Halftone



F6618 Blueberry Halftone



F6619 Citrus Halftone



Printed samples are shown at approximately 1:2 scale.

DOTSCREEN™



F6617 Tangelo Dotscreen



F6615 Aqua Dotscreen



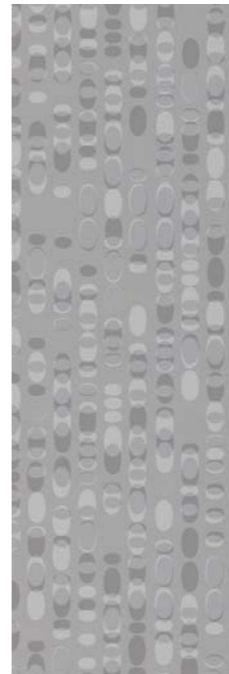
F6616 Mint Dotscreen

Printed samples are shown at approximately 1:2 scale.

ELLIPSE™



F6613 White Ellipse



F6614 Gray Ellipse



F1913 Red Ellipse



Printed samples are shown at approximately 1:2 scale.

ENDLESS™

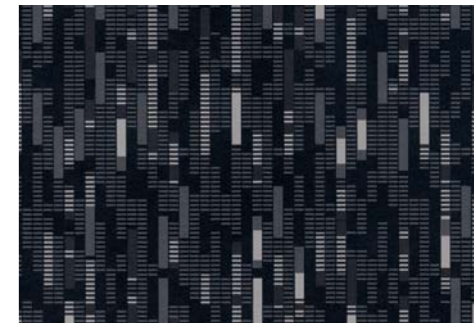


F6610 Endless Graytone

Printed samples are shown at approximately 1:2 scale.



F6612 Endless Indigo



F6611 Endless Smoke

Printed samples are shown at approximately 1:2 scale.